

**ENVIRONMENTAL MANAGEMENT**  
**BUSH REGENERATION**

**THIS CHAPTER PROVIDES INFORMATION ON**

Bush Regeneration



## FROM THE AABR PRESIDENT

The Australian Association of Bush Regenerators (AABR) is a non-government organisation dedicated to the appropriate management of natural areas in Australia, particularly with respect to ensuring any natural area restoration is undertaken by suitably qualified people.

Our activities are mainly around education, engagement and promoting standards; the latter including managing an accreditation system for bush regeneration practitioners. Our activities also include providing advice to agencies and councils on restoration, holding forums, training days and field trips, providing information (including videos) for practitioners through our website, and providing opportunities

for our members to network with each other and to reach out to others in related fields of practice.

AABR is also keen at an organisational level to explore opportunities with other organisations to address issues such as maximising ecological benefits and mitigating disbenefits from urban landscaping, recreational planning and development, and collaborating on areas of mutual interest.

AABR will continue to its activities around Australia, especially in relation to accreditation of qualified and experienced bush regenerators and engaging with government agencies on such things as restoring bushland after natural disasters.

**Peter Dixon | President, AABR**

## AUSTRALIAN ASSOCIATION OF BUSH REGENERATORS

### WHAT IS AABR?

Incorporated in NSW in 1986, Australian Association of Bush Regenerators (AABR) is an association with several hundred members all over Australia. Its aim is to promote the study and practice of ecological restoration, and foster and encourage effective management of natural areas by qualified people, based on sound ecological principles.

AABR is not an industry association. While many of its members are professional regenerators, many more are volunteers. AABR's focus is on increasing the understanding and uptake of best practice bush regeneration, irrespective of who is doing it.

### WHAT DOES AABR DO?

- Engages and supports programs that facilitate volunteers in ecological restoration
- Offers industry accreditation in assisted natural regeneration
- Manages an Accreditation Scheme for bush regeneration practitioners — valued by landholders/employers as recognition of competency
- Presents talks, seminars and field trips
- Manages a website with information about bush regeneration, news and current events, and a help page
- Produces *regenTV*, a video platform of inspirational ecological restoration projects from around Australia and internationally, talks by experts in diverse aspects of ecological restoration, field trips, seminars etc. [aabr.org.au/regentv](http://aabr.org.au/regentv). It is also on Youtube.
- Provides the Bushjobs service via the AABR website
- Publishes a contractor and consultants list
- Publishes regular high-quality newsletters
- Advocates to all levels of government regarding ecological restoration

### WHY JOIN AABR?

Membership helps AABR to promote good work practices in natural areas, improve planning and implementation of restoration by government and NGOs, support volunteer programs and strengthen the industry. To help you stay well informed, demonstrate your interest in ecological restoration, increase your employment prospects, and network with like-minded people.

AABR is the main non-government body working to advance bush regeneration in Australia. It has accomplished much by promoting ecological restoration and supporting all sectors involved in bushland management, but needs the support of a committed and growing member base to fulfil its goals. Membership entitles you to discount admission to AABR events, four newsletters per year, and a discount subscription to the *Ecological Management & Restoration* journal. What great value for \$35 a year!

### ECOLOGICAL RESTORATION

Ecological restoration is the intentional practice of assisting the recovery of locally occurring ecosystems, taking into account the significant changes that urbanisation, agriculture and pest species have caused. AABR draws specific attention to the pivotal role played by natural regeneration — a role that needs to be considered in all restoration projects.

Degradation of ecosystems varies on a spectrum from low to high. At the low degradation end, approaches focusing on assisting natural regeneration are most appropriate. At the higher degradation end, a reconstruction approach will be required, unless sufficiently long timeframes are available for natural recolonisation.

All approaches to restoration should aim to achieve very high levels of functional and structural similarity with the pre-existing ecosystem.

Bush regeneration is an Australian term for a form of ecological restoration involving a range of treatments — including the skilled removal of weeds — applied in a manner that triggers natural regeneration of surviving, dormant or nearby species.

AABR is proud to retain the term bush regeneration in its name, to acknowledge the pioneering contribution of this practice to the development of ecological restoration.

For more information see AABR's *Guiding Principles for Ecological Restoration and Rehabilitation* at [aabr.org.au](http://aabr.org.au)

### THE SEVEN DO'S OF ECOLOGICAL RESTORATION

- Address threats and causes of degradation
- Clearly identify project goals
- Soundly assess sites prior to deciding which restoration approach to use
- Consider all components of an ecological community
- Skillfully apply treatments, ensuring follow-up and maintenance
- Monitor to see if treatments are achieving their goals and adapt treatments as necessary
- Develop sustaining partnerships

### AABR MEMBERSHIP

AABR members include bush regeneration professionals, bushcare and landcare volunteers, natural area managers, landowners, policy makers, contractors, consultants, nursery people, local, state and Commonwealth government officers, and lots of people who just love the bush and want to see it conserved. AABR encourages all interested people to join. Apply for membership at [aabr.org.au](http://aabr.org.au)

### ACCREDITATION

AABR accreditation is generally accepted as recognition of competency as a bush regenerator. Accreditation is open to anyone who has 500 hours or more of practical experience in ecological restoration work (voluntary or paid) under an AABR-recognised supervisor over a period of at least two years and has completed an AABR-recognised course in bush regeneration. This experience and training leads to the applicant gaining the 12 bush regeneration competencies listed by AABR.

People with the same amount of field experience who feel they have gained the AABR competencies in other ways may also apply. This will involve a special assessment.

### CONTACT & INFORMATION

AABR c/o Total Environment Centre  
PO Box K61, Haymarket NSW 1240

**P** 0407 002 921

**E** [enquiries@aabr.org.au](mailto:enquiries@aabr.org.au)

**W** [aabr.org.au](http://aabr.org.au)

**f** @AusBushRegenerators



**BUSH REGENERATORS**

**NSW  
AUSTRALIAN  
ASSOCIATION OF  
BUSH REGENERATORS**



AABR promotes the study and practice of ecological restoration, and fosters and encourages effective managements of natural areas by qualified people, based on sound ecological principles.

PAGE 85

C/- Total Environment Centre  
PO Box K61  
Haymarket NSW 1240  
P 0407 002 921  
W aabr.org.au

**VIC  
FLEMING'S GROUP**



Fleming's is Australia's pre-eminent horticulture company spanning 100 years and four generations; it is a name synonymous with growing and developing beautiful landscape environments.

PAGE 40, 48, 240, 248

PO Box 1  
Monbulk VIC 3793  
P 03 9756 6105  
W flemings.com.au

**QLD  
AUSTRALIAN  
ENVIRONMENTAL  
LANDSCAPES (AEL)**



Bushland restoration, regeneration and maintenance. Weed management, wetland works, erosion control and commercial revegetation.

PAGE 51

122 Eagle Street  
Redbank Plains QLD 4301  
P 07 3814 4559  
W aelscapes.com.au

**EARTHLIFE**



Earthlife are a leading manufacturer and supplier of microbial rock mineral soil conditioners and fertilisers.

PAGE 228

Shed J/78 Vanity Street  
Rockville QLD 4350

P 07 4633 2219  
W earthlife.com.au

**TLCC**



TLCC's environmental services include on-ground delivery of ecosystem recovery plans, weed eradication plans, fauna management, tree protection and marine plant offsets.

PAGE 52

35 Fulcher Road  
Red Hill QLD 4059  
P 1300 131 353  
W tlcc.net.au

# ODS

## OUTDOOR DESIGN SOURCE



**ENVIRONMENTAL MANAGEMENT**

# EROSION CONTROL / SOIL STABILISATION

**THIS CHAPTER PROVIDES INFORMATION ON**

**GROUND ENGINEERING**

Bonded Fibre Matrix | Cellular Confinement Systems | Creek Rehabilitation  
Gabions/Rock Mattresses | Geogrids | Geomembranes | Geotextile Fabrics  
Hydro Mulching | Organic Matting | Revetment/Embankment Stabilisation  
Sediment/Silt Fences | Straw Mulching | Turf Reinforcement

**REVEGETATION**

Broad Hectare Planting | Conventional Seeding | Hydro Seeding | Native Seeding



## INTERNATIONAL EROSION CONTROL ASSOCIATION (AUSTRALASIA)

The International Erosion Control Association (IECA) serves as a global resource for people who share a common responsibility for the causes, prevention and control of soil erosion. IECA is a non-profit, international, member organisation that provides education, resource information and business opportunities for professionals in the erosion and sediment control industry.

### IECA MEMBERSHIP

An IECA membership can provide a connection to a diverse group of individuals from 30 countries who share the same concerns and professional challenges. IECA connects members with local events and information, conferences and field days, networking and education opportunities, industry publications, a members-only website, cost savings and more.

### NETWORKING | BROADEN YOUR NETWORK

Members who take the time to share ideas and build relationships are better positioned to expand their knowledge and advance their career.

### IECA Events and Conferences

Get member-exclusive savings to attend IECA events, including the Australasian Annual Conference; the largest gathering of leaders in the erosion, sediment control and stormwater industries. IECA events provide members with the opportunity to network with erosion and sediment control professionals from around the world.

### Serve on an IECA Committee or Board

Volunteering provides members with a great opportunity for networking and a closer look at how IECA's efforts directly affect the industry. Volunteer to help shape IECA and influence the direction of erosion and sediment control in Australasia.

### IECA Mentorship Program

The IECA Mentorship Program is designed to connect emerging leaders with seasoned professionals to encourage professional development and give back to the profession.

### PROFESSIONAL DEVELOPMENT | ENHANCE YOUR KNOWLEDGE

Professional development isn't an option, it's an ongoing necessity. IECA offers members more ways to increase their skillset and earn Professional Development Hours (PDH).

### IECA Events and Conferences

Get member-exclusive savings to attend IECA events, including the Australasian annual conference; the largest gathering of leaders in the erosion, sediment control and stormwater industry. IECA events provide members with the opportunity to earn PDH/CE hours, develop business skills and expand their knowledge.

### RECOGNITION | GAIN A COMPETITIVE ADVANTAGE

Leverage IECA member-only benefits to gain visibility and grow your business.

### IECA Online Membership Directory

All IECA members receive a free listing in the IECA Membership Directory. Industry professionals look to the directory as an informative resource. Members can download the IECA member logo to add to marketing material, email signatures, business cards, websites and other collateral.

### Advertising Discounts

IECA offers many opportunities for marketing through its publications, online advertising, event and conference sponsorships and exhibitor platforms.

### Environmental Excellence Awards Program

Each year IECA acknowledges members of the Association and the industry who have made extraordinary contributions. Award winners serve as inspirational industry leaders and are recognised at the annual conference and trade show.

### IECA Approved Training

*IECA Approved* training is delivered by providers who are regarded as technically proficient in erosion and sediment control. Training providers wishing to promote their erosion and sediment control training courses as *IECA Australasia Approved* can do so by applying to IECA for approval.

### RESOURCES | STAY ON THE CUTTING EDGE

Increase professional effectiveness and learn vital information to keep current, stay on top of change and meet the challenges it presents.

### IECA Enewsletter

Stay up to date with the latest original research and content to ensure career success. IECA is meticulous in ensuring members have access to timely information, educational news, surveys and special features highlighting the latest trends in erosion control and related fields through their enewsletter. Additional content can also be found on the IECA website.

### Best Practice Erosion and Sediment Control Document

This essential reference document advocates the adoption of erosion and sediment control practices appropriate for the site conditions and the potential risks of the receiving environment. The document is an invaluable resource for the inexperienced practitioner as well as for the competent soil erosion and sediment control practitioner.

### IECA Approved Training

*IECA Approved* training is delivered by providers who are regarded as technically proficient in erosion and sediment control and always accords with recognised industry best practice techniques.

### IECA Career Centre

Offers employers and recruiters targeted access to the nation's most qualified talent pool in the erosion and sediment control industry.

### CONTACT & INFORMATION

International Erosion Control Association

P 02 4677 0901

E admin@austieca.com.au

W austieca.com.au



## MALMSBURY TIMBERS

SUPPLY OF TIMBER, REVEGETATION AND EROSION CONTROL PRODUCTS

### COMPANY PROFILE

Malmsbury Timbers is a family-run business specialising for the last 50 years in all things timber stakes. In addition to timber, Malmsbury features a large range of erosion control, revegetation and civil products.

Malmsbury's dedication to sourcing quality, sustainable timber direct from manufacturers around the world means customers can rely on products that are not only durable but also responsibly produced at very economical prices.

With a fleet of delivery trucks, including a crane truck, Malmsbury has the capacity to deliver products throughout Victoria, either onsite or direct to customers on scheduled timelines.

### PRODUCTS AND SERVICES

Malmsbury Timbers manufactures and distributes a diverse range of timber stakes, offering a large range of black tree stakes, surveyor painted stakes and natural timber stakes in Australian or imported timber. Also available are redgum blocks and sleepers. Malmsbury is also a wholesale distributor of jute, coir, root barriers and non-woven polypropylene filler tubes.

Running a smooth, efficient manufacturing business is at the heart of what the Malmsbury team does. By continuously reinvesting in operations, prices are competitive while upholding high standards of quality and efficiency.

### SERVICEABLE AREAS

Australia-wide (delivery Victoria only)

### CONTACT

Malmsbury Timbers

**P** 03 5432 2210

**E** [admin@malmsburytimbers.com.au](mailto:admin@malmsburytimbers.com.au)

**W** [malmsburytimbers.com.au](http://malmsburytimbers.com.au)



# Malmsbury TIMBERS

**EROSION CONTROL & SOIL STABILISATION**

**NSW**

**ATLANTIS AURORA**



With 40 years' worth of experience, Atlantis provides the design and installation of vertical gardens and green roofs.

PAGE 74

3/19-21 Gibbes Street  
Chatswood NSW 2067  
P 02 9417 8344

W atlantisaurora.com

**ALL STAKE SUPPLY**



All Stake Supply provides environmental terrain solutions, specialising in land management, revegetation, erosion and site control solutions.

PAGE 253

19-21 Charles Street,  
St Marys NSW 2760

P 1300 130 123

W allstakesupply.com.au

**BENEDICT SAND & GRAVEL**



Landscape supplies, including aggregate and subbase material, composts, manures, mulches, gravels, pebbles, rock, recycled construction material, recycled organic products, sands and soils.

PAGE 203, 232

PO Box 431

Frenchs Forest NSW 1640

P 02 9986 3500

W benedict.com.au

**QLD**

**AUSTRALIAN ENVIRONMENTAL LANDSCAPES (AEL)**



Bushland restoration, regeneration and maintenance. Weed management, wetland works, erosion control and commercial revegetation.

PAGE 51

122 Eagle Street  
Redbank Plains QLD 4301

P 07 3814 4559

W aelscapes.com.au

**EARTHLIFE**



Earthlife is a leading manufacturer and supplier of microbial/rock mineral soil conditioners and fertilisers.

PAGE 228

Shed J/78 Vanity Street  
Rockville QLD 4350

P 07 4633 2219

W earthlife.com.au

**VIC**

**MALMSBURY TIMBERS**



Malmsbury Timbers manufactures and distributes a diverse range of timber stakes. It is also a wholesale distributor of revegetation and erosion control products such as jute, coir, root barriers and non-woven polypropylene filler tubes.

PAGE 168

17 Sullivan Street  
Malsbury VIC 3446

P 03 5423 2210

W malmsburytimbers.com.au

**TRANSROCK**



Transrock supplies Melbourne's most comprehensive

range of landscape stone and rock materials.

PAGE 231

5 Lower Homestead Road

Wonga Park VIC 3115

P 03 9722 0920

W transrock.com.au

**CELLULAR CONFINEMENT**

**NSW**

**ALL STAKE SUPPLY**



All Stake Supply provide environmental terrain solutions, specialising in land management, revegetation, erosion and site control solutions.

PAGE 253

19-21 Charles Street  
St Marys NSW 2760

P 1300 130 123

W allstakesupply.com.au

**CREEK REHABILITATION**

**QLD**

**AUSTRALIAN ENVIRONMENTAL LANDSCAPES (AEL)**



Bushland restoration, regeneration and maintenance. Weed management, wetland works, erosion control and commercial revegetation.

PAGE 51

122 Eagle Street  
Redbank Plains QLD 4301

P 07 3814 4559

W aelscapes.com.au

**GEOGRIDS/MEMBRANES/ TEXTILE FABRICS**

**NSW**

**ALL STAKE SUPPLY**



All Stake Supply provides environmental terrain solutions, specialising in land management, revegetation, erosion and site control solutions.

PAGE 253

19-21 Charles Street  
St Marys NSW 2760

P 1300 130 123

W allstakesupply.com.au

**VIC**

**MALMSBURY TIMBERS**



Malmsbury Timbers manufactures and distributes a diverse range of timber stakes. It is also a wholesale distributor of revegetation and erosion control products such as jute, coir, root barriers and non-woven polypropylene filler tubes.

PAGE 168

17 Sullivan Street  
Malsbury VIC 3446

P 03 5423 2210

W malmsburytimbers.com.au

**WA**

**SCAVENGER SUPPLIES, FRP GRATING AUSTRALIA**



Scavenger Supplies is an Australian-owned specialist in industrial products and services with a focus on manufacturing control systems that provide an environmentally safe and healthy workplace for all.

PAGE 140

8 Panton Road  
Greenfields WA 6210

P 02 4244 1008

W scavengersupplies.com.au

**REVEGETATION/EMBANKMENT STABILISATION & SEDIMENT/ SILT FENCES**

**NSW**

**ALL STAKE SUPPLY**



All Stake Supply provides environmental terrain solutions, specialising in land management, revegetation, erosion and site control solutions.

PAGE 253

19-21 Charles Street  
St Marys NSW 2760

P 1300 130 123

W allstakesupply.com.au

**VIC**

**MALMSBURY TIMBERS**



Malmsbury Timbers manufactures and distributes a diverse range of timber stakes. It is also a wholesale distributor of revegetation and erosion control products such as jute, coir, root barriers and non-woven polypropylene filler tubes.

PAGE 168

17 Sullivan Street  
Malsbury VIC 3446

P 03 5423 2210

W malmsburytimbers.com.au

**TURF REINFORCEMENT**

**NSW**

**ALL STAKE SUPPLY**



All Stake Supply provide a range of Turf Reinforcement Solutions. Bodpave, GrassProtecta, TurfProtecta and Econogrid.

PAGE 253

19-21 Charles Street  
St Marys NSW 2760

P 1300 130 123

W allstakesupply.com.au

**ORGANIC MATTING/ STRAW MULCHING**

**NSW**

**ALL STAKE SUPPLY**



All Stake Supply provides environmental terrain solutions, specialising in land management, revegetation, erosion and site control solutions.

PAGE 253

19-21 Charles Street  
St Marys NSW 2760

P 1300 130 123

W allstakesupply.com.au

**REVEGETATION & CONSERVATION CONSULTANTS**

**QLD**

**AUSTRALIAN ENVIRONMENTAL LANDSCAPES (AEL)**



Bushland restoration, regeneration and maintenance. Weed management, wetland works, erosion control and commercial revegetation.

PAGE 51

122 Eagle Street  
Redbank Plains QLD 4301

P 07 3814 4559

W aelscapes.com.au

**EARTHLIFE**



Earthlife is a leading manufacturer and supplier of microbial rock mineral soil conditioners and fertilisers.

PAGE 228

Shed J/78 Vanity Street  
Rockville QLD 4350

P 07 4633 2219

W earthlife.com.au

**BROAD HECTARE PLANTING**

**QLD**

**AUSTRALIAN ENVIRONMENTAL LANDSCAPES (AEL)**



Bushland restoration, regeneration and maintenance. Weed management, wetland works, erosion control and commercial revegetation.

PAGE 51

122 Eagle Street  
Redbank Plains QLD 4301

P 07 3814 4559

W aelscapes.com.au

**ODS** | OUTDOOR  
DESIGN  
SOURCE

# BOOK YOUR SPOT

Ensure your place in next year's ODS  
by calling 02 9887 0351



**ENVIRONMENTAL MANAGEMENT**  
**GREEN ROOFS &  
GREEN WALLS**

**THIS CHAPTER PROVIDES INFORMATION ON**

Construction and Installation | Consultants | Designers and Contractors  
Irrigation | Maintenance | Materials and Supplies | Plants,  
Soils and Growing Mediums | Waterproofing



## A MESSAGE FROM GRAus

"We have the technology to grow plants anywhere, over concrete, on building walls, on rooftops, so let's get on with it."

Green city development will continue to be commercially driven due to economic rationales, environmental benefits and social demands for more plants. Though, finally, finally, federal, state and local governments are acknowledging green technology as a means of achieving climate change adaptation.

In 2024, we have the technology, the expertise, the research and the public support for cities to incorporate more vegetated spaces, which will provide economic, social and environmental benefits for future generations. Urban density and climate change is our new reality, so we need to adapt by adopting the genius of nature.

More green walls, green roofs, urban forests, street canopy planting, parks, rain gardens, street swales, renewable energy technology and landscaping. Plants make it all possible!

GRA is a not-for-profit, registered environment charity. As such, we rely on commercial sponsorship and membership to operate. We need your support. If your company or career is associated with plants, join us!

In support of our ongoing commitment to greening urban environments, we have created a new website: Green Infrastructure Australia. With both an industry website and a free advocacy website, GRAus will now be able to promote members and sponsors on both its websites.

## GREEN ROOFS AUSTRALASIA

### ABOUT GRAUS

Green Roofs Australasia (GRAus) was formed in 2007 as the peak body national association to promote the technology, associated services, trades and suppliers of landscaping for buildings (plants on buildings, living architecture, Ecotecture).

GRAus has expanded its promotional activities and information to include Green Infrastructure, which encompasses all urban landscaping technologies, products, trades and associated suppliers in Australia and New Zealand.

- GRAus ADVOCATES for more urban landscaping.
- GRAus PROMOTES the trades and suppliers that can deliver on green urban landscapes and buildings.

### VISION STATEMENT

The expansion of urban landscapes.

### GRAus PROMOTE INDUSTRY MEMBERS:

- Design and construction professionals (architects, engineers, landscape architects and designers)
- Landscape trades (horticulturalists, landscapers, growers)
- Building trades (irrigation, waterproofers, builders)
- Gardening suppliers (soil suppliers, plant nurseries, plant growers)
- Product suppliers (drainage, geofabrics, green roof/wall systems, irrigation, waterproof membranes)
- Green roof/wall installers and maintenance workers

### MEMBERSHIP BENEFITS

- Project upload facility with images and details
- Business directory listing and promotion
- Full library, research data and image gallery access
- Blogging and social media access
- Conference discounts and industry networking

### MEMBERSHIP FEES

- Free membership with limited benefits and access
- Student Membership \$33 pa
- Individual Membership \$55 pa
- Sole Trader Membership \$77 pa
- Small Business Membership (<10 staff) \$220 pa
- Business Membership (>10 staff) \$440 pa
- University/Institution/Corporate/Local Council Membership \$440 pa
- Capital City Council/State Government Membership \$1000 pa

### GRAus SPONSORSHIP

Green Sponsorship	\$8000 pa
Diamond Sponsorship	\$4000 pa
Gold Sponsorship	\$2800 pa
Silver Sponsorship	\$1800 pa

### CONTACT & INFORMATION

Office Admin | [info@graus.com.au](mailto:info@graus.com.au)

Matthew Dillon, President | [president@graus.com.au](mailto:president@graus.com.au)

**W** [greenroofsau.com.au](http://greenroofsau.com.au)

**W** [greeninfrastructureaus.org](http://greeninfrastructureaus.org)

Follow GRAus on Facebook, Instagram, LinkedIn, and Blog [#greenroofsau](https://www.instagram.com/greenroofsau)



**ATLANTIS AURORA**

ECOLOGICAL LANDSCAPES

**COMPANY PROFILE**

With over a decade of experience in designing and installing vertical gardens worldwide, Atlantis Aurora has established itself as a leader in transforming both indoor and outdoor spaces into lush, green environments. Its vertical gardens add significant value to new and existing buildings, creating aesthetically pleasing and healthy spaces for all to enjoy. By integrating refreshing vertical garden backdrops, the visual appeal is not only enhanced, but also there is an improvement to air quality by converting harmful toxins and purifying the air. The company's vertical gardens add value to indoor and outdoor spaces by transforming new and existing buildings into beautiful green environments for patrons to enjoy. Interiors are renewed with refreshing vertical garden backdrops that convert harmful toxins and purify the air.

Atlantis Aurora's systems are designed for water efficiency and longevity, ensuring they are both cost-effective and low-maintenance. The company utilises select materials that provide durability, preventing the need for replacements or repairs over the product's lifetime. Its systems feature industry-standard irrigation systems, which are easily accessible and maintainable.

Since 1986, the Atlantis brand has provided the landscaping industry with innovative products. The team are experienced professionals from multiple disciplines that work together to provide sustainable solutions for today's green building and infrastructure requirements.

The Atlantis approach to vertical garden design is customised to meet specific project requirements and adapt to local environmental conditions, ensuring each installation is sustainable and healthy. The philosophy is to create green cities that function like sponges, capturing and filtering rainwater for reuse while replenishing natural aquifers, and providing carbon sinks through abundant vegetation.

**PRODUCTS AND SERVICES**

Atlantis Aurora specialises in the design, supply and installation of vertical gardens and green roofs. The comprehensive range of services include:

**Vertical garden design and installation** | Customised vertical gardens that transform any space.

**Vertical garden supply and project management** | End-to-end solutions for vertical garden projects.

**Green roof design and installation** | Innovative green roof solutions that enhance building sustainability.

**Stormwater design and project management** | Efficient stormwater management systems integrated into green designs.

**Vertical garden and green roof maintenance** | Ensuring longevity and performance of installations with expert maintenance.

**PROJECTS**

- Afterpay Office | Surry Hills NSW
- Sonder Office | Waterloo NSW
- Art House Apartments | Waterloo NSW
- Meadowbank TAFE | Meadowbank NSW
- Anderledy Lodge | North Sydney NSW
- Shopping Complex | Ellensbrook WA
- The Esplanade | Cairns QLD
- Novotel | Dubai UAE
- Shopping Mall | Santiago Chile

**SERVICEABLE AREAS**

Global

**CONTACT**

Atlantis Aurora  
 3/19-21 Gibbes Street  
 Chatswood NSW 2067  
**P** 02 9417 8344  
**E** info@atlantiscorp.com.au  
**W** atlantisaurora.com



**EVERGREEN INFRASTRUCTURE**

GREEN INFRASTRUCTURE DESIGN AND CONSULTING SERVICES

**COMPANY PROFILE**

Evergreen Infrastructure helps businesses and developers achieve sustainability goals through expert green infrastructure solutions. As Australia's leading independent consultants, Evergreen Infrastructure combine horticultural expertise, construction knowledge and climate action strategies to deliver urban greening projects that benefit people, profit and the planet.

Evergreen Infrastructure bring unique horticultural and construction knowledge to every green infrastructure project. As independent consultants, the team delivers unbiased recommendations focused solely on project success.

With decades of hands-on experience, the knowledgeable team at Evergreen Infrastructure bridge the gap between design concepts and practical implementation.

**PRODUCTS AND SERVICES**

Evergreen Infrastructure specialises in green infrastructure solutions for the urban and built environment. With work steeped in a commitment to respond to global environmental issues, Evergreen reimagines more sustainable lifestyles in both private and public spaces.

The team at Evergreen are specialists in urban greening solutions and can provide design, consultancy and project management services to suit a variety of projects.

- Green roofs
- Green walls and facades
- Urban farms
- Nature-based solutions
- Therapeutic landscapes and horticultural programs

**PROJECTS**

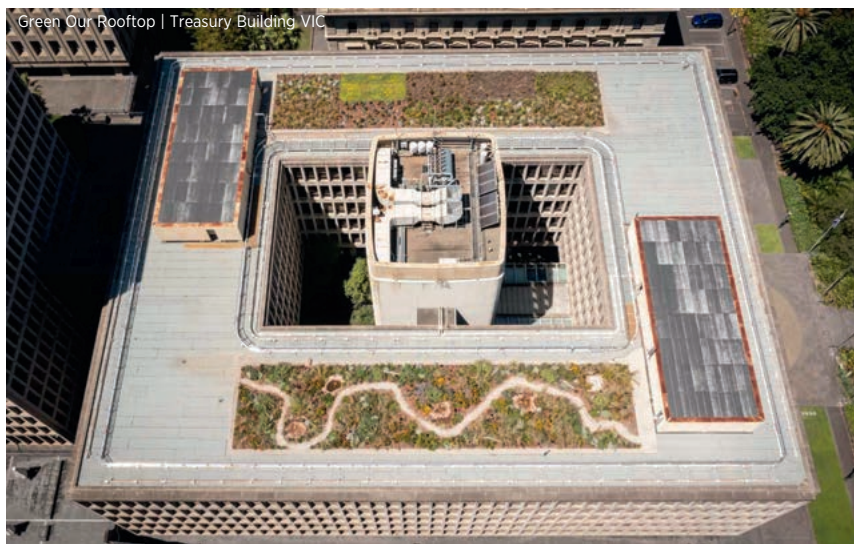
- The Bruce Kensington | VIC
- Green Line education and display suite | VIC
- Treasury House | VIC
- Catholic Regional College Sydenham | VIC
- Austin Hospital | VIC

**SERVICEABLE AREA**

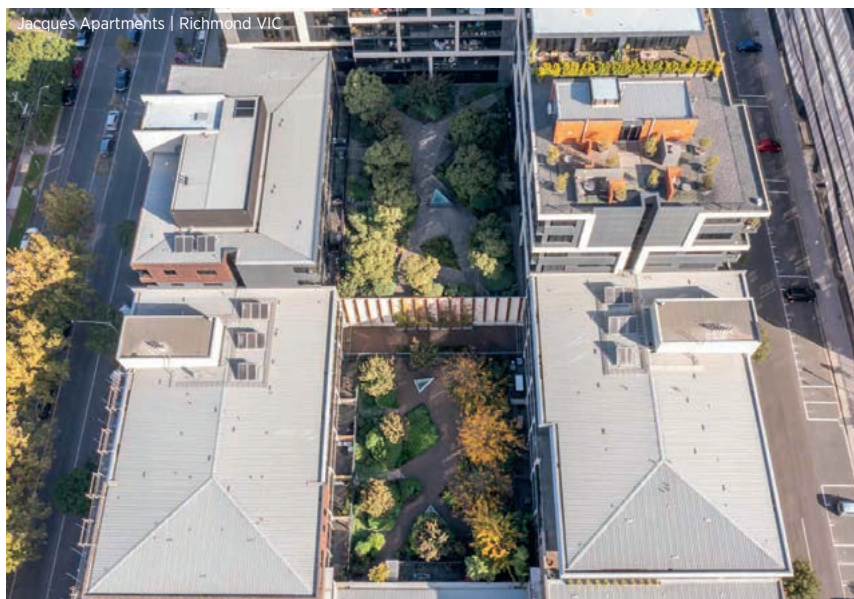
Australia and Southeast Asia

**CONTACT**

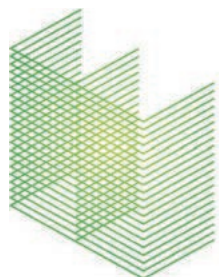
Evergreen Infrastructure  
 Michael Casey | Director  
 P 0411 520 796  
 E hello@evergreeninfrastructure.com.au  
 W evergreeninfrastructure.com.au



Green Our Rooftop | Treasury Building VIC



Jacques Apartments | Richmond VIC



EVERGREEN  
INFRASTRUCTURE



The Bruce Biodiversity Greenroof | Kensington VIC

## GREEN ROOFS & GREEN WALLS CONSTRUCTION & INSTALLATION

### NSW

#### ATLANTIS AURORA



With 40 years' worth of experience, Atlantis provides the design and installation of vertical gardens and green roofs.

PAGE 74

3/19-21 Gibbes Street  
Chatswood NSW 2067  
P 02 9417 8344  
W atlantisaurora.com

#### GRANGE GROWING SOLUTIONS



Green roof and green wall growing media, specialised formulas for hard- to-grow varieties.

PAGE 232

355 Stannix Park Road  
Ebenezer NSW 2756  
P 02 4579 8333  
W growingsolutions.com.au

### VIC

#### EVERGREEN INFRASTRUCTURE



Evergreen Infrastructure creates green oases in urban settings that are beautiful, timeless and transformative. Drawing from innovative technologies, Evergreen translates global ideas into local solutions.

PAGE 97

PO Box 392  
Hawthorn VIC 3122  
P 0411 520 796  
W evergreeninfrastructure.com.au

#### DESIGNERS & CONTRACTORS

### NSW

#### ATLANTIS AURORA



With 40 years' worth of experience, Atlantis provides the design and installation of vertical gardens and green roofs.

PAGE 74

3/19-21 Gibbes Street  
Chatswood NSW 2067  
P 02 9417 8344  
W atlantisaurora.com

### VIC

#### EVERGREEN INFRASTRUCTURE



Evergreen Infrastructure creates green oases in urban settings that are beautiful, timeless and transformative. Drawing from innovative technologies, Evergreen translates global ideas into local solutions.

PAGE 97

PO Box 392, Hawthorn VIC 3122  
P 0411 520 796  
W evergreeninfrastructure.com.au

### IRRIGATION

### NSW

#### ATLANTIS AURORA



With 40 years' worth of experience, Atlantis provides the design and installation of vertical gardens and green roofs.

PAGE 74

3/19-21 Gibbes Street  
Chatswood NSW 2067  
P 02 9417 8344  
W atlantisaurora.com

### MATERIALS & SUPPLIES

### NSW

#### BENEDICT SAND & GRAVEL



Landscape supplies, including composts, manures, mulches, gravels, pebbles, rock, recycled construction material, recycled organic products, sands and soils.

PAGE 203, 232

PO Box 431  
Frenchs Forest NSW 1640  
P 02 9986 3500  
W benedict.com.au

### QLD

#### ECOVIA TURF



Supply and installation of drainage cells and environmentally friendly artificial turf for green roofs.

PAGE 254

146 Rickertt Road  
Ransome QLD 4154  
P 0422 257 729  
W ecoviaturf.com.au

### WA

#### SCAVENGER SUPPLIES, FRP GRATING AUSTRALIA



Scavenger Supplies is an Australian-owned specialist in industrial products and services with a focus on manufacturing control systems that provide an environmentally safe and healthy workplace for all.

PAGE 140

8 Panton Road  
Greenfields WA 6210  
P 02 4244 1008  
W scavengersupplies.com.au

### PLANTS

### NSW

#### PARADISE PLANTS

Paradise Plants is well known for creating tough, reliable, beautiful plants that stand the test of time. The Paradise range is available Australia-wide via a broad network of wholesale growers.

PAGE 243

PO Box 7003  
Kariang NSW 2250  
P 0419 467 567  
W paradiseplants.com.au

### QLD

#### PLANTS DIRECT QUEENSLAND



Plants Direct Queensland is a leading production nursery that has been supplying quality plants to the landscape industry since 1982. All stock is container-grown and sun-hardened to meet AS2303:2015 standards.

PAGE 247

147 Dean Road  
Verrierdale QLD 4562  
P 07 5449 1909  
W plantsdirectqld.com.au

### VIC

#### FLEMING'S GROUP



The Fleming's Group is an expert grower of shrubs and trees, offering fruit, ornamental, deciduous, evergreen and native Australian varieties. Products are available year-round from bare root in winter, small containers up to 33cm, and advanced trees from 45L to 1000L.

PAGE 40, 48, 240, 248

PO Box 1  
Monbulk VIC 3793  
P 03 9756 6105  
W flemings.com.au

### TALL TREES



Tall Trees is a wholesale nursery specialising in advanced trees, natives and exotics, shrubs, grasses and groundcovers for urban development and general landscape plant supplies.

PAGE 244

37 Bittern-Dromana Road  
Balnarring VIC 3926  
P 03 5983 0166  
W talltrees.com.au

### SOILS & GROWING MEDIUMS

### NSW

#### BENEDICT SAND & GRAVEL



Landscape supplies, including composts, manures, mulches, gravels, pebbles, rock, recycled construction material, recycled organic products, sands and soils.

PAGE 203, 232

PO Box 431  
Frenchs Forest NSW 1640  
P 02 9986 3500  
W benedict.com.au

#### GRANGE GROWING SOLUTIONS



Green roof and green wall growing media, specialised formulas for hard-to-grow varieties.

PAGE 232

355 Stannix Park Road  
Ebenezer NSW 2756  
P 02 4579 8333  
W growingsolutions.com.au

### WATERPROOFING

### NSW

#### ATLANTIS AURORA



With 40 years' worth of experience, Atlantis provides the design and installation of vertical gardens and green roofs.

PAGE 74

3/19-21 Gibbes Street  
Chatswood NSW 2067  
P 02 9417 8344  
W atlantisaurora.com

