



Easily operated with the turn of the handle: tilt inwards at the top for child proof ventilation; turn and fully open for easy cleaning. Energy efficient and draft proof, with high sound protection, and secure locking.



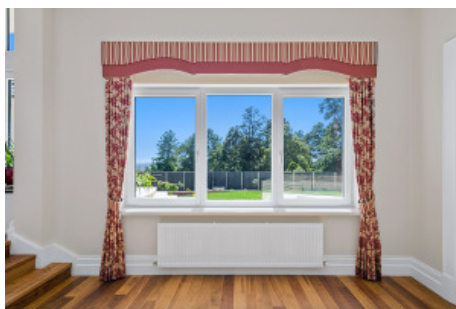
Specifications

- Internal IV 68mm Victorian Ash frame, low VOC spray-painted or stained in the colour of your choice
- External aluminium cladding powder-coated in wide range of colours
- Timber and cladding separated by 3mm clip system to stop condensation and subsequent rot
- Triple glazed 2x up to 16mm or double glazed 1x up to 22mm argon filled gap
- Choice of glass combinations
- Custom made
- German tilt & turn hardware fittings
- Seals and multi-point locking
- Childproof available
- Suited for bushfire areas up to and including BAL-29, and for Passive House

Size:

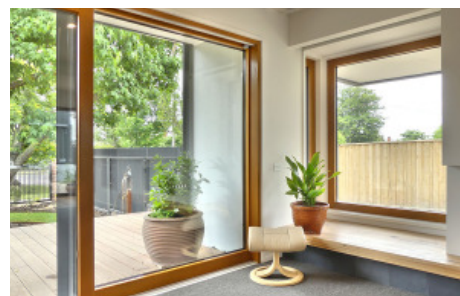
- Minimum 600mm height x 420mm width
- Width up to 1400mm at min height of 1500mm, max 2100mm
- Height up to 2700mm at max width of 1000mm

WERS energy rating: from a very low 1.0





Fixed panes enable you to enjoy a clear view without obstruction, acting as a picture frame for the scenery outside of the window. Often used in combination with openable windows or doors.



Specifications

- Internal IV 68mm timber frame, low VOC spray-painted or stained in the colour of your choice
- External aluminium cladding powder-coated in a wide range of colours
- Timber and cladding separated by 3mm clip system to stop condensation and subsequent rot
- Triple glazed 2x up to 16mm or double glazed 1x up to 22mm argon filled gap
- Choice of glass combinations
- Custom made
- Suited for bushfire areas up to and including BAL-29, and for Passive House

Size:

- Width up to 4000mm
- Height up to 4000mm
- Maximum overall 11m²

WERS energy rating: from a very low 0.8





For special spaces where only a sliding window is suitable. Parallel-slide-tilt or lift-slide options are available. Highly energy efficient and draft proof with high sound protection. Custom made to size and finish.



Specifications

- Internal IV 68mm timber frame, low VOC spray-painted or stained in the colour of your choice
- External aluminium cladding powder-coated in a wide range of colours
- Timber and cladding separated by 3mm clip system to stop condensation and subsequent rot
- Triple glazed 2x up to 16mm or double glazed 1x up to 22mm argon filled gap
- Choice of glass combinations
- Custom made
- German sliding hardware (parallel-slide-tilt or lift-slide)
- Seals and multi-point locking
- Suited for bushfire areas up to and including BAL-29, and for Passive House

Size:

- Width up to 6000mm
- Height up to 2400mm

WERS energy rating: from a very low 1.0



Perfect for opening up a large space. High energy efficiency and operated with a handle on every second window. No rattling and no need for shoot bolts. Inside folding only, also with tilt function.



Specifications

- Internal IV 68mm timber frame, low VOC spray-painted or stained in the colour of your choice
- External aluminium cladding powder-coated in a wide range of colours
- Timber and cladding separated by 3mm clip system to stop condensation and subsequent rot
- Triple glazed 2x up to 16mm or double glazed 1x up to 22mm argon filled gap
- Choice of glass combinations
- Custom made, inside folding only, also available with tilt function
- German bi-fold hardware fittings
- Seals and multi-point locking
- Suited for bushfire areas up to and including BAL-29, and for Passive House

Size:

- Width up to 6000mm
- Height up to 2400mm

WERS energy rating: U-value from a very low 1.0



Tilting inwards at the top for ventilation, windows can be horizontal or vertical. The handle controls the mechanics and multi-point locking within the frame. Can be automated for hard to reach areas.



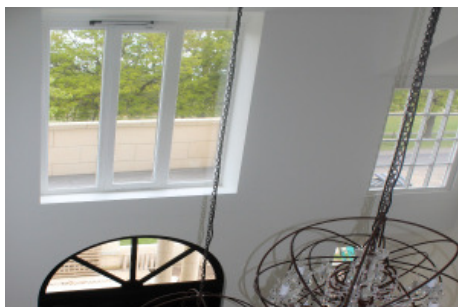
Specifications

- Internal IV 68mm timber frame, low VOC spray-painted or stained in the colour of your choice
- External aluminium cladding powder-coated in a wide range of colours
- Timber and cladding separated by 3mm clip system to stop condensation and subsequent rot
- Triple glazed 2x up to 16mm or double glazed 1x up to 22mm argon filled gap
- Choice of glass combinations
- Custom made
- German tilt hardware, multi-point locking
- Seals to eliminate drafts
- Can be automated with concealed chain drive
- Suited for bushfire areas up to and including BAL-29, and for Passive House

Size:

- Maximum width 3000mm at maximum height of 700mm
- Height up to 2700mm at maximum width of 1500mm
- Height minimum 450mm

WERS energy rating: from a very low 1.0





Custom made to size and shape to suit any building. Angled, round, oval or curved, these windows can be made in a fixed pane or can be openable, and are highly energy efficient.



Specifications

- Internal IV 68mm timber frame, low VOC spray-painted or stained in the colour of your choice
- External aluminium cladding powder-coated in a wide range of colours
- Timber and cladding separated by 3mm clip system to stop condensation and subsequent rot
- Triple glazed 2x up to 16mm or double glazed 1x up to 22mm argon filled gap
- Choice of glass combinations
- Custom made
- German tilt and turn fittings, multi-point locking
- Seals to eliminate drafts
- Childproof available
- Also fixed shapes/picture windows available
- Suited for bushfire areas up to and including BAL-29, and for Passive House

Size:

- Minimum 600mm height x 600mm width
- Width up to 1400mm at min height of 1500mm, max 2100mm
- Height up to 2700mm at max width of 1000mm
- Angled shapes only, for rounded shapes please see **Architectural Timber Windows - Shaped**

WERS energy rating: from a very low 1.0

